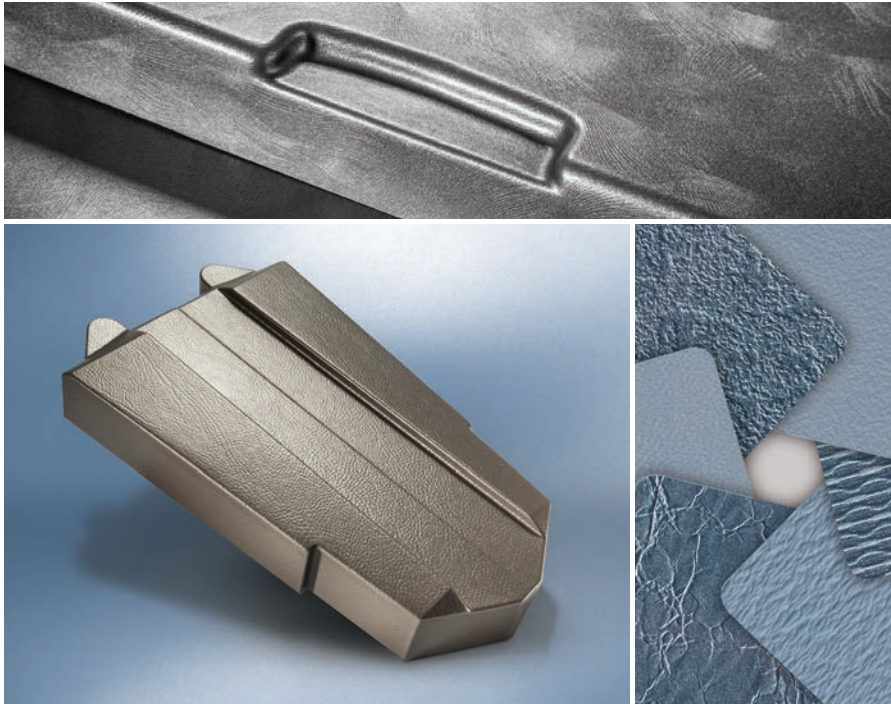


BOLTARON® 9815P

Custom Textured FAR 65/65 Rated Sheet

High impact 65/65 rated sheet features unlimited custom textures and colors



Boltaron® 9815P is a proprietary, fire retardant, extruded PVC/Acrylic alloy that is offered in unlimited surface textures and unlimited colors, providing designers with new ways to enhance the appearance of aircraft interior components.

It differs from Boltaron® 9815E (extruded) sheet in that it is press-laminated, offering unlimited custom textures economically in low minimums with fast turnaround, allowing the production of prototypes and limited runs prior to full-scale production.

In addition, the sheet exhibits exceptional physical properties, most notably Izod impact resistance of 5.0 ft-lb/in. (265 J/m), significantly improving the durability of thermoformed aircraft interior components, while meeting stringent FAA requirements for flammability, smoke generation and heat release.

The Boltaron® 9815 aircraft rated product family comprises 9815E extruded sheet, 9815M in metallic finishes, 9815D with unlimited decorative effects, 9815P in the widest range of textures, and 9815F film and thin-gauge sheet for two- and three-dimensional laminating.

Advantages

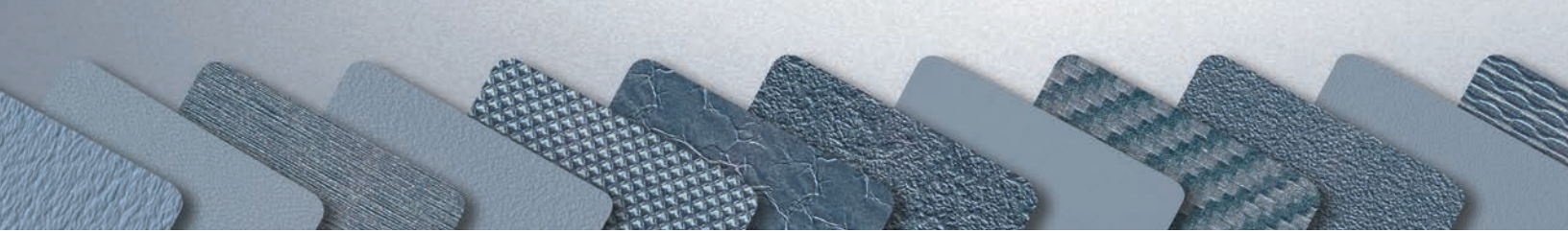
- Wide range of surface textures and colors
- 66% Greater impact resistance than other 65/65 thermoplastic alloy sheet
- Uniform high quality appearance
- Wall thickness integrity in deep draw forming
- Custom textures and colors at low minimums
- Lot-to-lot texture and color consistency

Proven Applications

- Instrument panel housings
- Class dividers
- Bulkhead laminates
- Galley and lavatory components
- Bull noses, gap covers, moldings
- Sidewall and kick panels
- Window reveals
- Seat parts, backs, arm rests
- Tray tables
- Passenger Service Units (PSUs)
- Light housings
- Video monitor shrouds
- Life vest shrouds
- Air ducts

Configurations

- Sheet sizes
 - Lengths: 99 or 122 in. (2,514 or 3,099 mm)
 - Widths: Up to 50 in. (1,270 mm) depending on pattern
 - Gauges from 0.040 to 0.250 in. (1.02 to 6.35 mm)
 - Custom sizes, gauges on request
- Colors, textures, decorative effects
 - Widest available range
 - 500 lb minimum



PROPERTIES, RATINGS

PROPERTY	TEST METHOD*	TYPICAL VALUES	
Specific Gravity	ASTM D792	1.490	
Tensile Strength	ASTM D638	5,500 psi	38 MPa
Flexural Strength	ASTM D790	8,700 psi	60 MPa
Flexural Modulus	ASTM D790	410,000 psi	2,827 MPa
Izod Impact (notched) @ 73°F (23°C)	ASTM D256	5.0 ft-lb/in.	265 J/m
Hardness Rockwell	ASTM D785	107	
Heat Deflection (annealed)	ASTM D648	170°F @ 264 psi	77°C @ 1.8 MPa
Thermal Expansion	ASTM D696	1.67 X 10 ⁻⁵ /°F	3 X 10 ⁻⁵ /°C

FAR RATINGS

Flammability	FAR 25.853(a)(i) FAR 25.853(a)(ii)	PASS ALL PASS ALL
OSU Heat Release Peak - HRR, kW/m ² 2 Min - HRR, kW-min/m ²	FAR 25.853(d)(Part IV)	<65 <65
NBS Smoke Ds @ 1.5 min Ds @ 4 min	FAR 25.853(d)(Part V)	<100 <200

*All tests at 73°F (22.8°C) in dry conditions unless otherwise noted.

BOLTARON® FAR RATED SHEET PRODUCTS

9815 high impact resistant sheet family

- Boltaron® 9815D: Decorative patterns, textures
- Boltaron® 9815M: Metallic surface finish
- Boltaron® 9815F: Film, thin-gauge sheet
- Boltaron® 9815P: Custom textures

Enhanced performance grades

- Boltaron® 4205: Superior temperature resistance
- Boltaron® 4330: Superior impact resistance
- Boltaron® 9915FSTH: Polycarbonate; fully compliant

Window shade grades

- Boltaron® 9200/9200C
- Boltaron® 9250/9250C: Higher temperature

Clear and translucent grades

- Boltaron® 4350 sheet
- Boltaron® 9816: Custom routed panels
- Boltaron® 9916: Polycarbonate; fully compliant
- Boltaron® 4300 sheet: Type II PVC

Additional Boltaron FAR-rated grades

- Boltaron® 6530
- Boltaron® 6540
- Boltaron® 6800
- Boltaron® 6800E

THERMOFORMING GUIDELINES

Mold Shrinkage	0.5 - 0.7%	
Forming Temperature	335 - 370°F	168 - 188°C
Typical Heater Settings	30 - 50% Top, 50 - 70% Bottom	
Drying	Not Required	

SIMONA offers the widest product range of PVC sheet and rod – FM 4910 rated sheet – chemical resistant materials from PVC, PP and PE to fluoropolymers – orthotics and prosthetics sheet – Boltaron aircraft sheet – plus proven products for boat building, outdoor furniture and many other industries.

DISCLAIMER AND LIMITATION OF WARRANTY:
 All information contained herein is believed by SIMONA AMERICA Inc. to be reliable. Typical properties are based on laboratory tests conducted on material samples in accordance with standard test methodology. SIMONA AMERICA Inc. makes no express or implied warranty that its products will perform in accordance with the data in all conditions and circumstances. To determine suitability for use, users must test applications under actual operating conditions. As a result, ALL EXPRESS OR IMPLIED WARRANTIES IN CONNECTION WITH SIMONA AMERICA INC. and BOLTARON PRODUCTS INCLUDING WARRANTIES OF MERCHANTABILITY AND FITNESS FOR A PARTICULAR PURPOSE ARE EXPRESSLY DISCLAIMED.

Boltaron Inc.
 1 General Street
 Newcomerstown, OH 43832
 Phone 1 740 498 5900
 (US) 1 800 342 7444
 Fax 1 740 498 5448
 info@boltaron.com
 www.boltaron.com